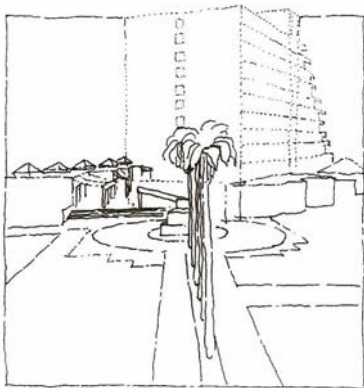


HOTEL CONDOMINIUM, IXTAPA, MEXICO

Katie Powellⁱ, Project Designer, Beck & Associates

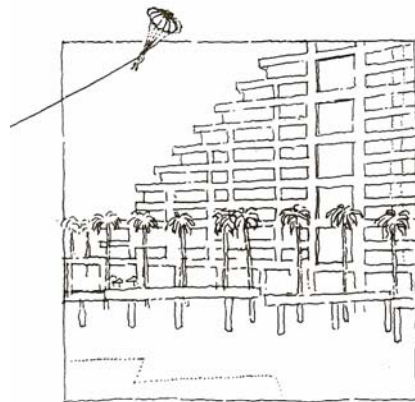


The project was a joint venture between several firms to redesign a hotel project which PYASA, a civil engineering company out of Mexico City, had begun and halted during construction in 1982. The new design goals were to fill a gap in the Mexican hospitality market by catering to the needs of a family taking a one to two week vacation, as opposed to the weekend junkets available for couples and singles in Acapulco and Cancun.



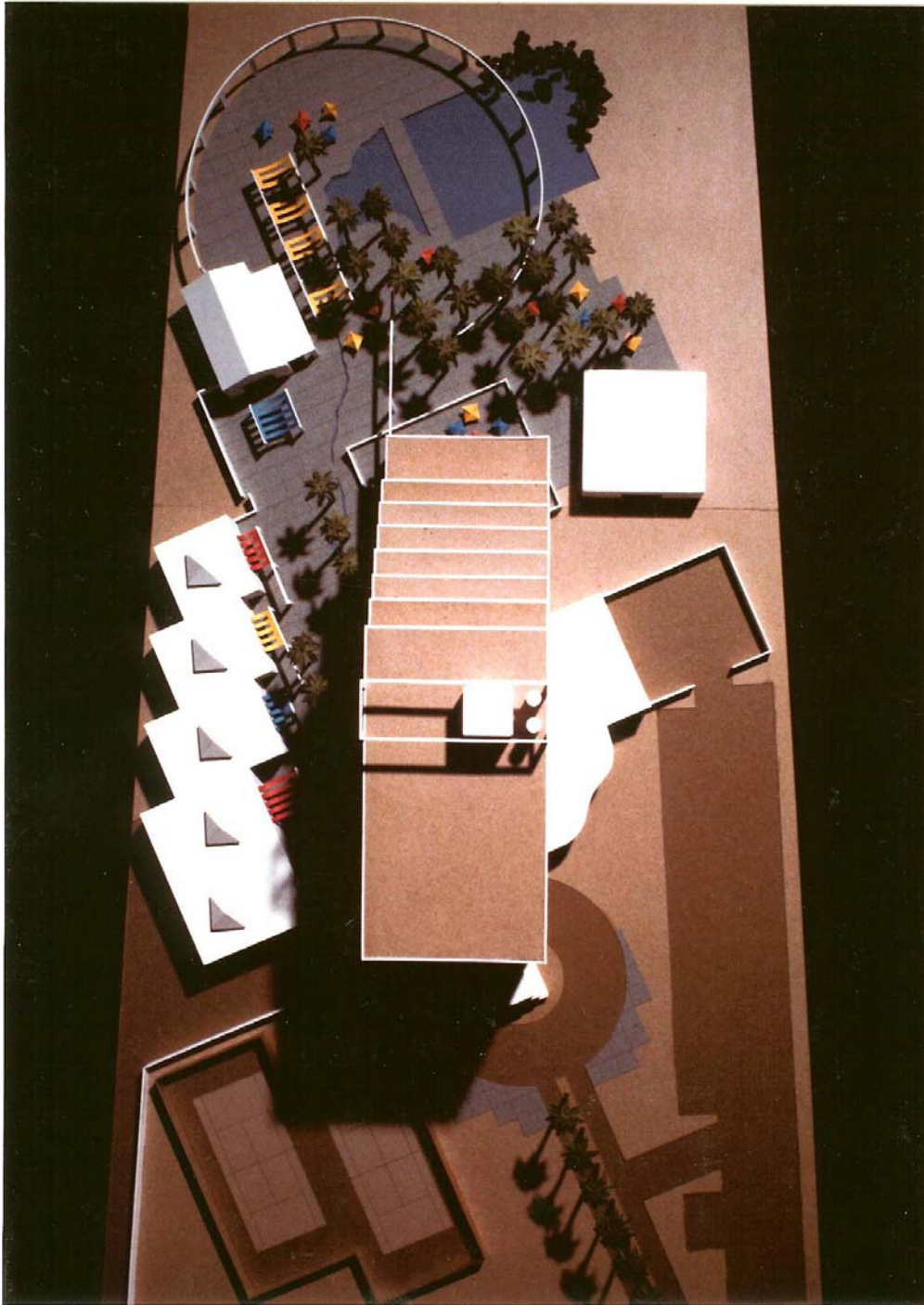
Auto approach

We concentrated our efforts upon designing a sequence of outdoor spaces along a north/south axis between the hotel and the Pacific Ocean. The "sleepy resort" consisted of two distinct outdoor plazas that accommodated the varying age groups and mix of families and young married



Colonnade

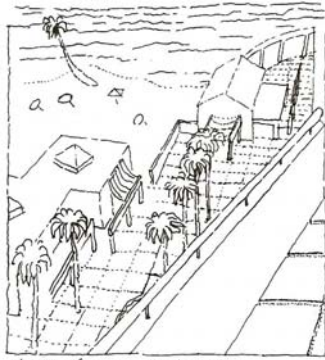
couples. Just beyond the fountain is an active "mercato" plaza with shopping, cafes, and bars. The axis terminates in a quiet, sunny plaza with pool and framed views of the beautiful beach and ocean beyond.





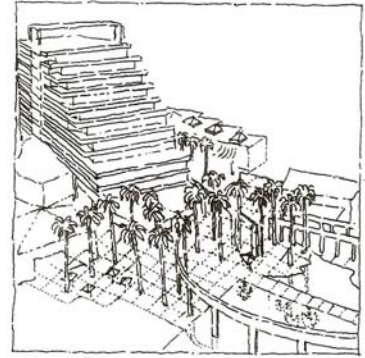
The most striking physical aspect of the Ixtapa region is the contrast of the arid landscape to the vast blue of the ocean, and acres of date palm trees which are planted on each side by local farmers. Picking up on these cues, we reinforced pedestrian movement along the axis with a system of palms and water.





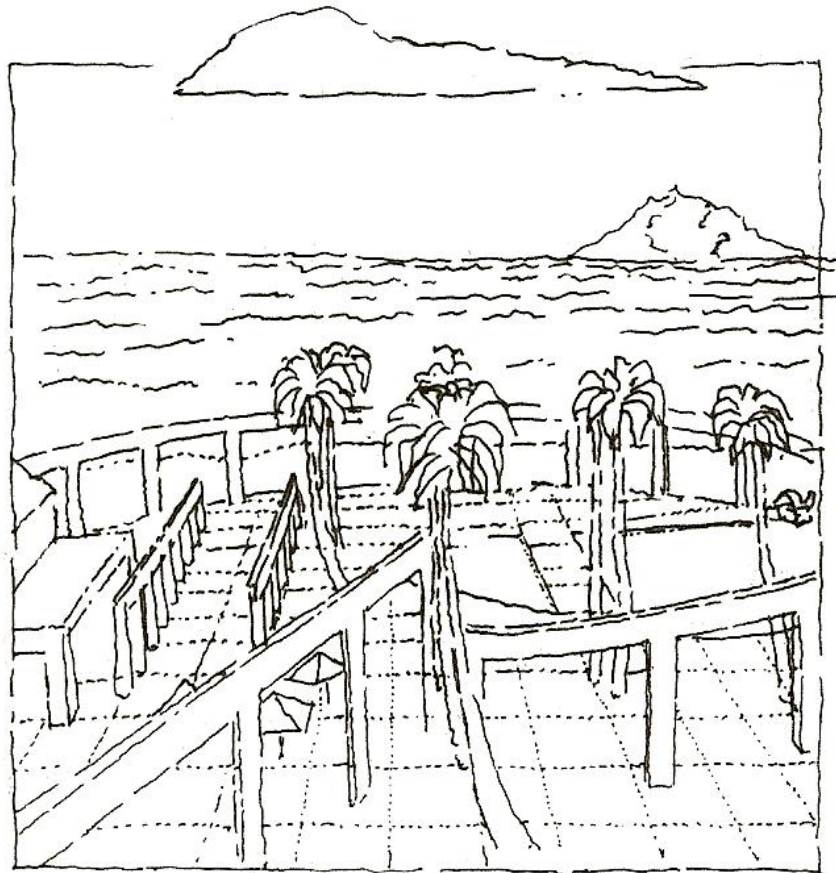
View from guest room

Working with the givens of the high-rise "ruin (half-built structure) we reconfigured the interior from a 250 unit hotel to 100 one, two and three bedroom suite apartments, with wonderful balconies. It was a priority for each bedroom to have a private balcony.



View from parachute

The building will be poured in place concrete with Mexican materials throughout, such as Torreon marble and locally produced terra cotta tiles.



Looking down to the plaza



- LEGEND**
- 1 ARRIVAL
 - 2 LOBBY
 - 3 CHECK-IN
 - 4 ADMINISTRATION
 - 5 SERVICE
 - 6 SERVICE YARD
 - 7 RESTAURANT
 - 8 PATIO DINING
 - 9 DAYCARE CENTER
 - 10 POOL SIDE DINING
 - 11 CAFE/BAR
 - 12 SHOPS
 - 13 MARKET
 - 14 DELIVERIES
 - 15 PARKING

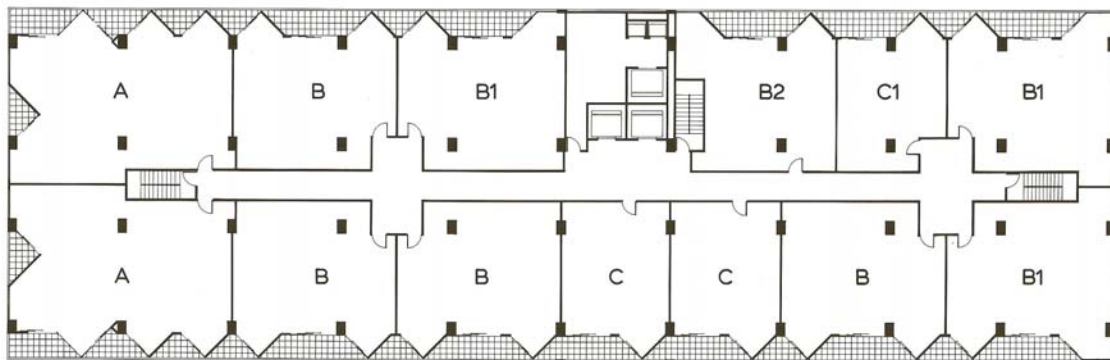
SITE PLAN 



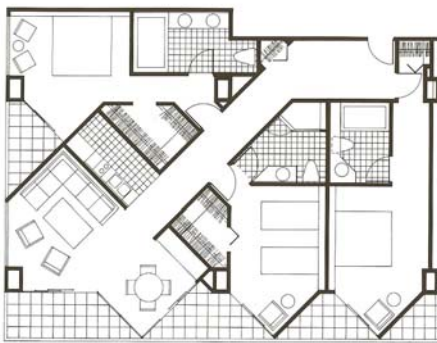
EAST ELEVATION



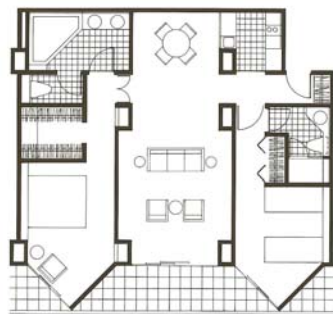
SOUTH ELEVATION



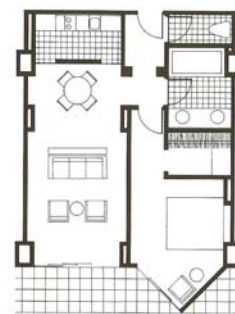
TYPICAL FLOOR PLAN 



UNIT A



UNIT B



UNIT C

ⁱ Katie Powell was using her maiden name, Debra Catherine Beck. This project was a collaboration between Beck and Associates (Katie's firm), Rockefeller/Hricak Architects, and Beer & Associates, Landscape Architects.